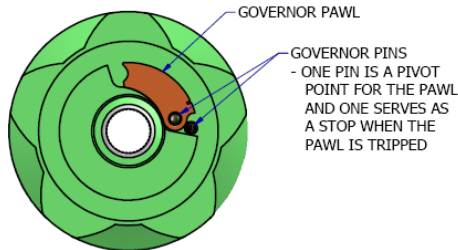
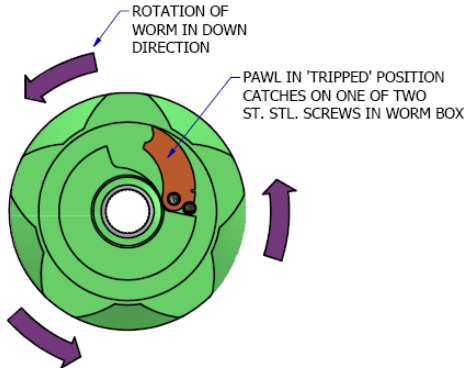


## Overspeed Governor Test in the Field — Rave Stair Lift



DETAIL A - RUN POSITION



DETAIL B - TRIPPED POSITION

To test the overspeed safety device, the lift needs to travel approximately 52 fpm in the down direction. To do this, remove the motor wires (marked M1 and M2) and brake wires from the circuit board (marked B1 and B2) and apply 24VDC to the brake wires.

The illustrations on this page indicated the run and tripped position of the governor (you will not be able to see this in the field).

With a rated load of 350 pounds, the device will set very quickly upon the brake releasing (within 2" of travel). In the event the device fails to set, remove the power to the brake to stop the lift.

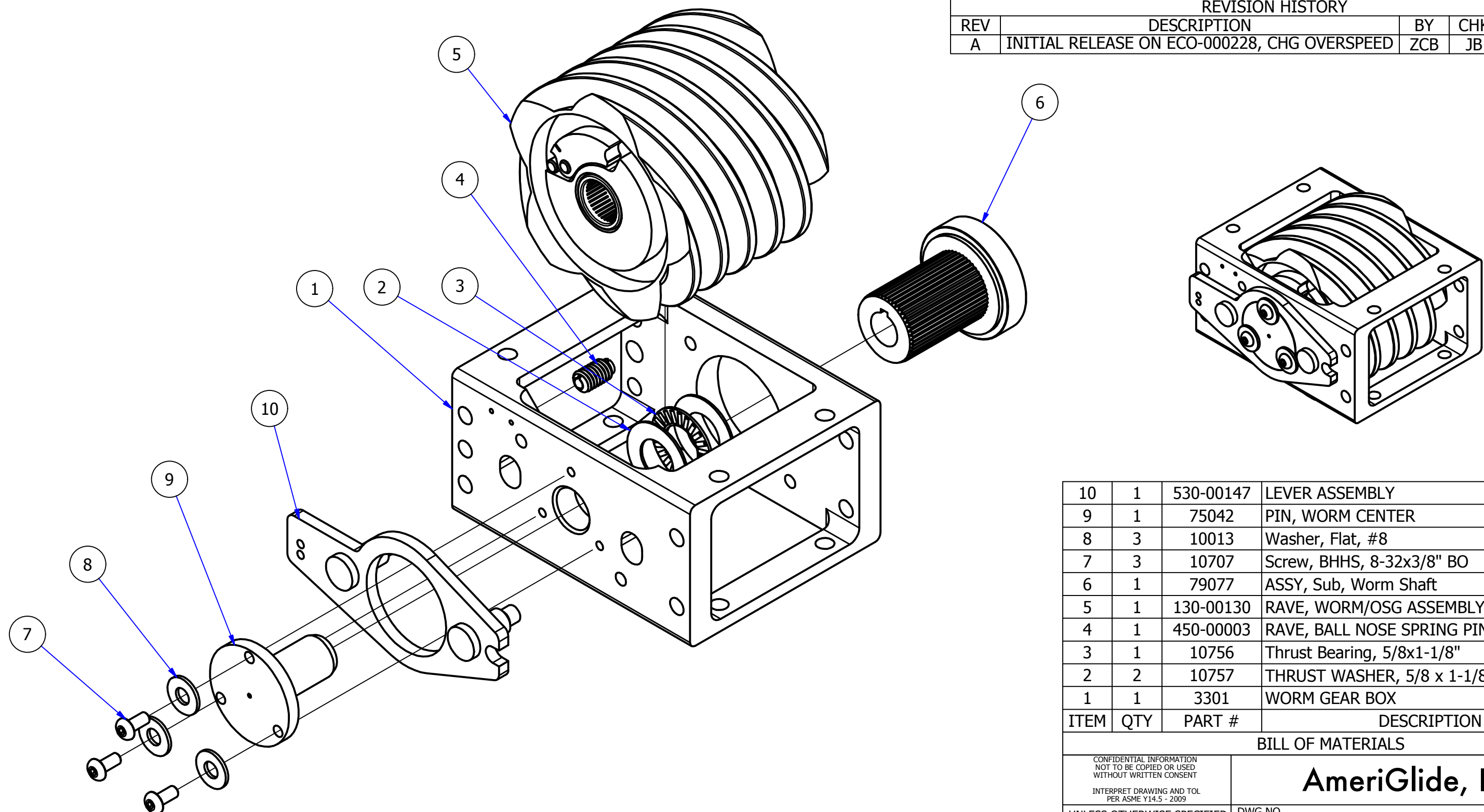
*The brake is not polarity sensitive.*

After the test, remove the power from the brake and reconnect the brake to the circuit board. Run the lift in the up direction to reset the device.

### Overspeed Notes:

- Governor pawl is attached to the down hill side of the worm gear and actuates off of centrifugal force.
- When downward speed reaches ~48 to 52 fpm, the pawl is forced away from the cent of rotation, catching on one of two stainless steel screws that are secured in the worm box frame, stopping the lift immediately.
- Motion of the lift in the up direction will release and reset the pawl.
- During normal operation, a torsion spring holds the pawl in the run position. Safety will set at any speed in the down direction if the spring fails.

REVISION HISTORY				
REV	DESCRIPTION	BY	CHK	DATE
A	INITIAL RELEASE ON ECO-000228, CHG OVERSPEED	ZCB	JB	27-May-14



- NOTES:**
- LUBRICATE THRUST BEARING WITH SUPERLUBE.
  - PRESS WORM SHAFT INTO WORM WITH TOOL.
  - SECURE SCREW (ITEM #7) WITH BLUE LOCTITE (3X).
  - SECURE SPRING PIN (ITEM #4) WITH RED LOCTITE.

ITEM	QTY	PART #	DESCRIPTION
10	1	530-00147	LEVER ASSEMBLY
9	1	75042	PIN, WORM CENTER
8	3	10013	Washer, Flat, #8
7	3	10707	Screw, BHHS, 8-32x3/8" BO
6	1	79077	ASSY, Sub, Worm Shaft
5	1	130-00130	RAVE, WORM/OSG ASSEMBLY
4	1	450-00003	RAVE, BALL NOSE SPRING PIN
3	1	10756	Thrust Bearing, 5/8x1-1/8"
2	2	10757	THRUST WASHER, 5/8 x 1-1/8 x .032"
1	1	3301	WORM GEAR BOX

**BILL OF MATERIALS**

CONFIDENTIAL INFORMATION  
NOT TO BE COPIED OR USED  
WITHOUT WRITTEN CONSENT

INTERPRET DRAWING AND TOL  
PER ASME Y14.5 - 2009

UNLESS OTHERWISE SPECIFIED  
DIMENSIONS ARE IN INCHES.  
TOLERANCES ARE:

DECIMALS	.X	± 0.1
	.XX	± 0.02
	.XXX	± 0.010
ANGLES	-	± 1'

- DO NOT MEASURE  
FROM DRAWING.

**AmeriGlide, Inc.**

DWG NO.	<b>130-00147</b>	REV	<b>A</b>
DESCRIPTION			
<b>ASSY, RAVE WORM BOX W/ OSG</b>			
DRAWN BY	Z BROWN	DATE	27-May-14
SCALE	NTS	SIZE	B
SHEET 1 OF 1			